

Country Home

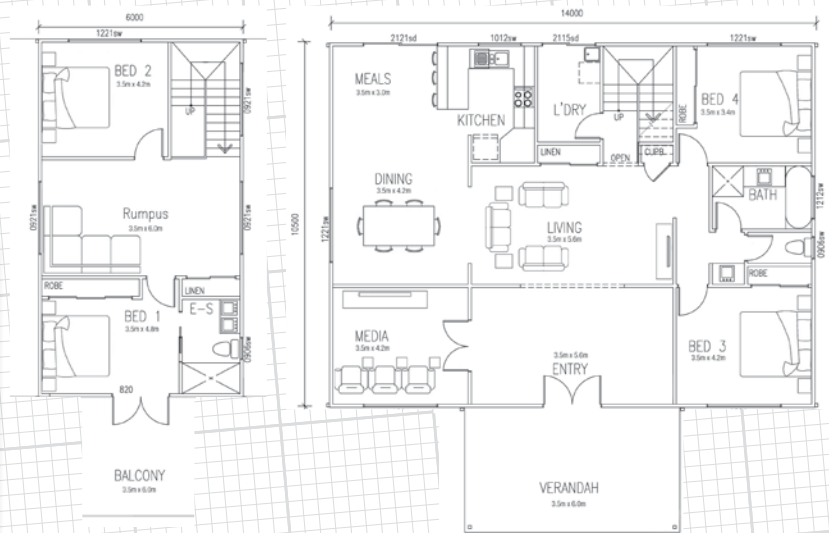
The Country Home kit features both ground and first floor living and outdoor areas to maximise the coastal and country breezes. There are two sizes available and both come fully equipped with steel materials and engineering plans and floor plans. The largest design showcases a media room and five bedrooms including a large master bedroom with ensuite and walk in robe.



Floor Plans

Country Home Kit 2

For a full listing of all Wide Span Homes floor plans, please visit our website at www.sheds.com.au



Testimonial

Country Home Kit 3

We are so impressed with our 'Country Home'. It has turned out to be a contemporary house that is easy to live in and looks fantastic. The flexibility of designing your own internal floor plan is great. Our kitchen and living areas are upstairs so we can take advantage of the lovely hinterland/bush views.

The high ceilings and the front and back verandahs add to the spacious feel and with both sliding doors open we get a lovely cooling breeze. We chose to upgrade and get an additional verandah at the back - I highly recommend this option. Our friends are amazed at how spacious the bedrooms are, and our ensuite is a dream bathroom with space for a large spa bath, twin vanity, large shower recess, separate toilet and still more than enough room to swing a cat or two!

The house has generated a lot of interest and positive comments. My husband loves it because of the maintenance factor, no external painting, just an occasional pressure wash keeps it looking like new! I love the fact that you can add your own touches and personalise the design. We have lived in dozens of houses over the years but this one is definitely our favourite.

Beverly Guy

Standard Inclusions

- » BlueScope Steel external walls, internal walls & truss frames provided in kit form
- » BlueScope Steel internal stud wall frames ready to line
- » ZINCALUME® roof sheeting
- » COLORBOND® external horizontal wall sheeting
- » COLORBOND® guttering
- » Mezzanine floor (bearers and joists)
- » Front verandah
- » Floor plans
- » Full engineering plans
- » BlueScope Steel structural steel warranty*

Optional Extras

- » COLORBOND® roof sheeting
- » Raised flooring pack
- » Alternate wall sheeting options
- » Rear verandah



Size (Area Sqm²)

Price \$

Kit 2: 252m²

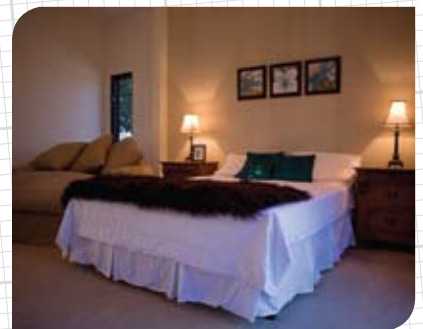
14m x 14m inc. verandahs

\$34,750

Kit 3: 345m²

16.5m x 15m inc. verandahs

\$47,500



*BlueScope Steel warranty information, visit: www.bluescopesteel.com.au/warranties

Genuine SALE ON NOW!

➔ Genuine sale on now! We're offering genuine savings across our entire range of cold form steel buildings. Don't miss out, call today and save!



WIDE SPAN HOMES



Q: Who is Wide Span Homes?

A: Wide Span Homes is the residential division of Wide Span Sheds. Wide Span Homes are an Australian owned and operated company that supply steel buildings throughout Australia and manufactures locally throughout Australia in 21 locations nationally.

Wide Span Homes wholesale to the public a comprehensive range of Australian designed steel frame kit homes, and in recent years have grown to become a market leader within Australia. Our range of kit homes is extremely popular as they are built around a steel frame, thus making them a durable, versatile and cost effective building solution that is quick and easy to assemble.

Steel frame kit homes also provide a number of unique benefits, including a greater resistance to fire and termites, a solid structure that won't warp or bend as a result of extreme weather; and most importantly, they offer the best value for your money.

Q: What does Wide Span Homes supply?

A: Wide Span Homes are supplied to lock up stage excluding windows, doors, concrete slab and timber flooring. You have the option to complete your project as an owner builder or engage a local builder to assist.

The building's steel components are supplied and bundled together ready for you to assemble. We provide all the roof sheeting, guttering, external cladding and the front verandah.

Internally, we supply the steel stud frame walls and all the steel bearers and joists. We also supply the full engineering and floor plans. For a complete list of steel components supplied for each home, please see our standard inclusions list for your preferred building.

Q: How can Wide Span Homes save me money?

A: Wide Span Homes is a leading Australian manufacture of steel kit homes. Throughout the years, we have formulated a product and service that ultimately saves you money! We only supply the basic steel products required for your home.

By taking this approach, you can source additional components such as windows and doors yourself (without having to pay a builder's margin) and finish the building to your preferred taste and budget. This also ensures minimal damage and theft while valuable items are on site.



VISIT WWW.WIDESPANHOMES.COM.AU

Zinc = Zinalume all over
CB = Colorbond walls & trim, Zinalume Roof


Wide Span Homes
No Compromise Steel Building Solutions.